

WZ.CreateEntity

<https://documentation.dcr.design/example/wz-createentity/>

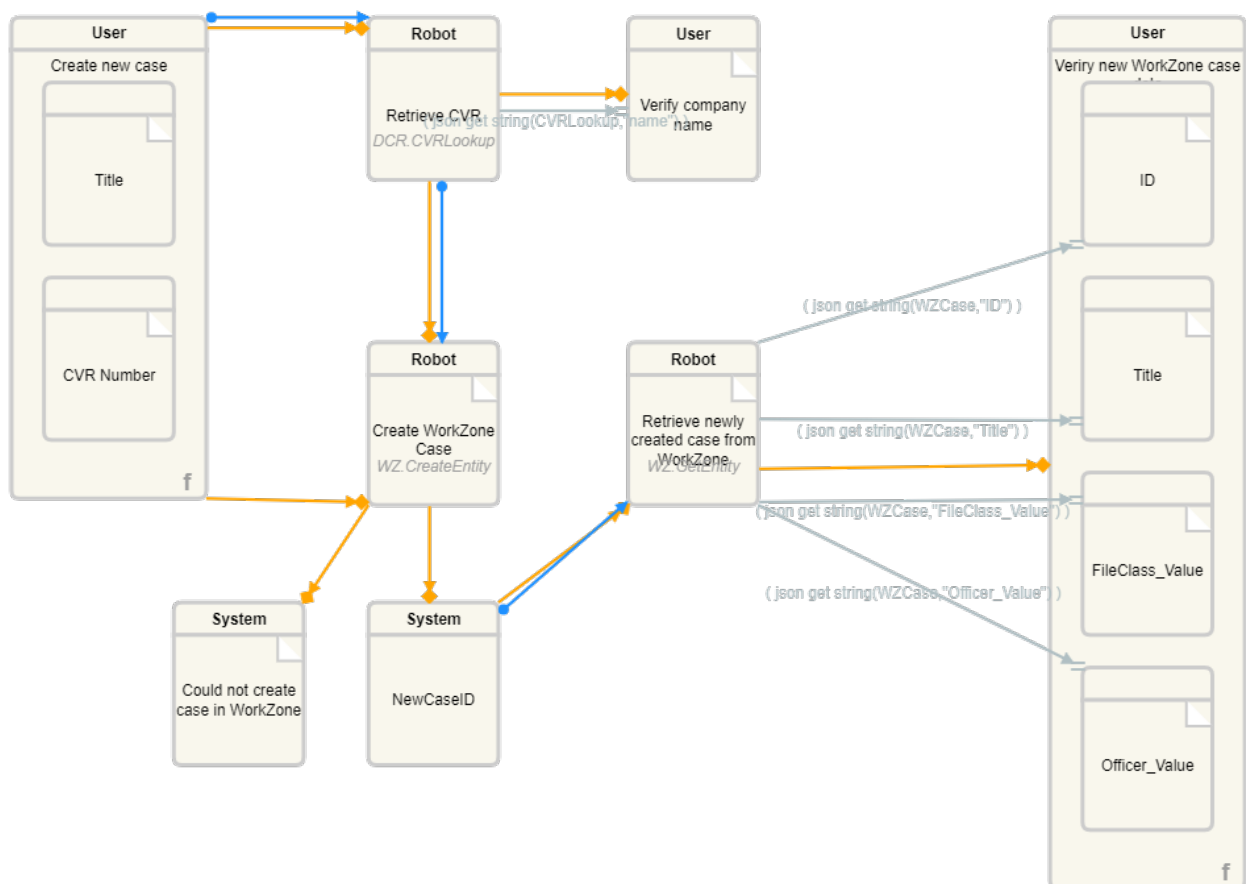
First the user must fill out the form values Title and CVR Number. The the robot lookup the CVR Number using the DCR.CVRLookup effect. The user can inspect the company once completed.

Using the company name a new case is created in WorkZone using the WZ.CreateEntity effect. In case it succeeds the id of the WorkZone case is returned, and information about the newly created case is retrieved using WZ.GetEntity. Once completed the user can inspect the values.

If an error happens or the request times out, the activity Could not create case in WorkZone is executed indicating that an error happened.

Notice: In order to simulate this example you need to make a copy of the graph and move it to your own organization, and ensure that the [WorkZone dynamic effect package](#) is configured for your organization.

Featured image



GraphId : 1699597

Semantic Type : KMD WorkZone

Audience : Modelers

Type : Null

